



6 KINCAID LANE · CHATHAM

WWW.6KINCAIDLANE.COM

SARITTE HAREL

973.713.9464

SARITTE@HARELREALESTATE.COM



WWW.SARITTEHAREL.COM

LAUREN SCHRAEDER

908.447.8713

LAUREN@HARELREALESTATE.COM

Custom built, this majestic Chatham home, set on 2.23 manicured acres, is beautifully-appointed with high-end finishes and stunning architectural details. With two finished levels including 6 bedrooms, 5 full and 2 half baths, this sprawling, private, sun-drenched home features exquisite craftsmanship, an expansive interior, and lush, resort-like grounds with coveted skyline views.

Offering privacy and tranquility, yet still in close proximity to shopping, recreation and transportation to NYC, 6 Kincaid is truly one-of-a-kind.









Upon entering this spectacular home you'll be charmed by the myriad of thoughtful details including an open layout, designer finishes, plentiful windows, and dramatic spiral staircase.

The jewel-box of a dining room is perfect for hosting any affair - from holiday gatherings to lavish dinner parties. The fireplace and coffered ceiling lends a chic, sophisticated vibe, while the multiple, extra wide doorways create an inviting flow.

The spacious living room, large enough to accommodate an oversized sectional and full-size pool table, boasts the reverse side of the fireplace and extra-wide doorways.

A modern kitchen with white cabinets, granite countertops, contrasting center island, and high-end appliances allows for eat-in dining in the bright and airy breakfast room, while the adjacent family room features a dramatic cathedral ceiling, stacked stone-surround fireplace, gorgeous distressed wood ceiling beams, and oversized windows that cast a sun-lit glow. Dual powder rooms and one of the home's two laundry areas are also conveniently located on the first floor.





Also on the main level is the primary bedroom, featuring two expansive walk-in closets with separate dressing areas and custom built-ins. A spa-like full bath with dual sinks, separate jetted tub and radiant heated stall shower, complete the primary suite.

Upstairs, five graciously-appointed bedrooms and baths allow family and guests to unwind in luxurious surroundings.

The spacious, partially finished basement is currently set up as an 1800 square foot home gym but can be customized to accommodate any recreational desires, including a theater room, children's play space, or private guest wing.







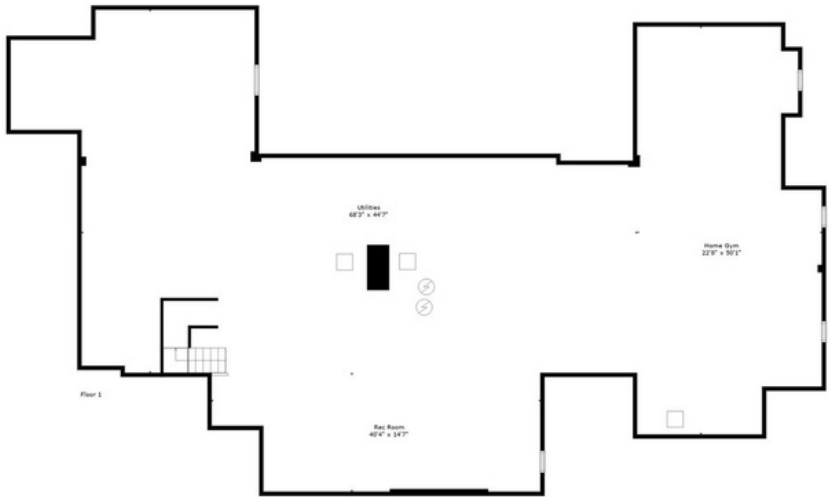
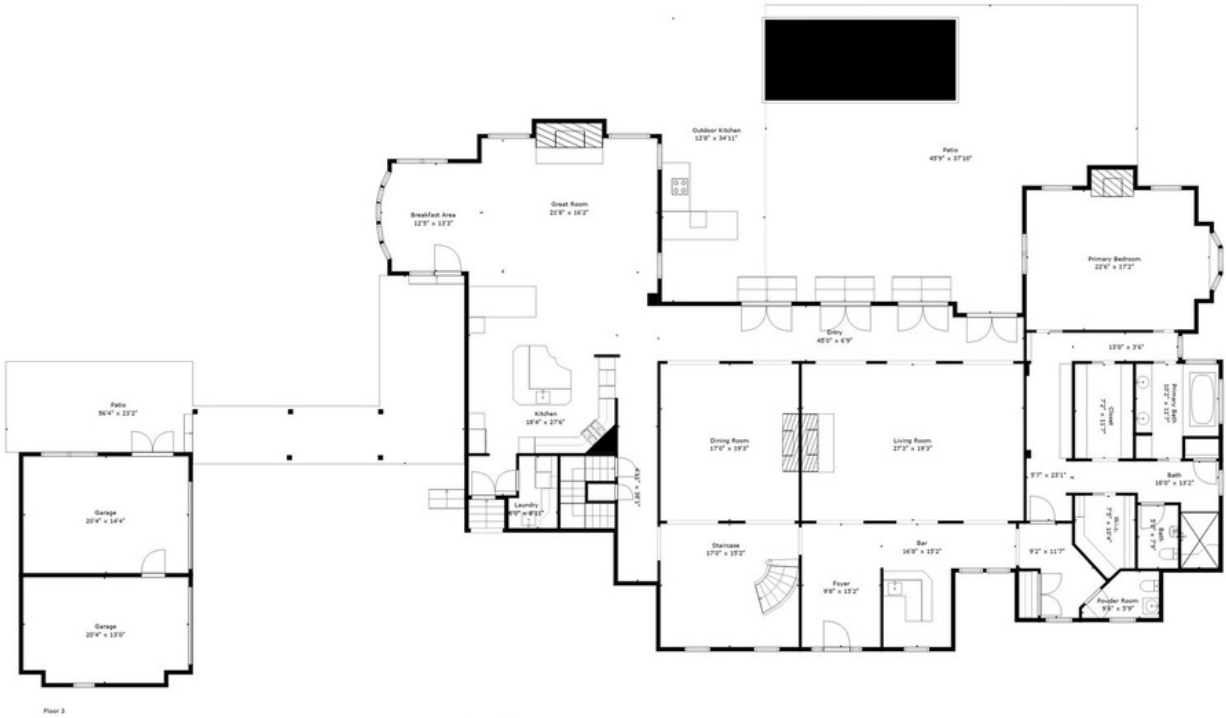


Outside, a true sanctuary awaits. A charming koi pond provides the perfect backdrop for enjoying some relaxation and quiet reflection, while the heated inground saltwater pool serves as a cool respite. The mature landscaping and pristine grounds offer incredible skyline views and a built-in kitchen area with gas bbq and refrigerator make for seamless al fresco dining, rivaling any high-end resort. The attached 3-car garage has a built-in lift which can fit two cars, while a second detached garage accommodates two spots, each able to fit an additional lift.

This one-of-a-kind home, set on over 2 acres of private property in one of New Jersey's most desirable towns, is an entertainer's paradise, with over 7,000 square feet of living space, countless amenities, and thoughtful upgrades throughout. With a builder's eye and designer's flair, no detail has been overlooked in this truly exceptional home, ready to call your own.



FLOOR PLANS



Floor 3

Floor 4

Floor 2

Floor 1

PARTICULARS

- 6 bedrooms, 5 full, 2 half baths
- Renovated 2022; built 2011
- 2.23 acres, private lush backyard
- Sought after neighborhood

HIGHLIGHTS

- Over 7,200 sq ft of newly renovated living space
- High-end flooring including hardwood, marble, stone and carpet
- Coffered ceiling in dining room
- 3 fireplaces
- Beautiful architectural elements including dramatic Brazilian wood spiral staircase, custom built-ins and cathedral ceilings
- Open layout, ideal for entertaining
- Dual powder rooms on first floor
- Designer kitchen features white cabinets, granite countertops, center island and breakfast bar, dual sinks including a farmhouse sink, Hans Grohe faucet, Wolf double oven and 6-burner gas Wolf cooktop and warming drawer and Sub Zero Brazilian Cherry Wine refrigerator
- Primary suite features oversized walk-in closets, separate dressing area, and custom built-ins

- Primary bath includes dual sinks, jetted tub, and stall shower, radiant heated floors bath and shower, Hans Grohe rain shower
- Attractive, arched windows
- Smart home (Nest thermostat & Lutron Remote Access lighting)
- Whole house water filtration system
- Laundry, conveniently located on both 1st and 2nd floor
- 1800 square foot gym space in the partially finished basement
- Security system with indoor and outdoor surveillance
- Sound system throughout interior and exterior of home

EXTERIOR & GROUNDS

- Designer stucco exterior with imitation slate roof
- Skyline views
- Mature landscaping
- Heated driveway and walkway
- Dual garages (3-car attached with 14 foot ceilings and 2 lifts, and additional detached with option for lifts)
- Driveway pavers
- Koi pond
- Heated saltwater Latham pool with Pentair heater and filter (constructed 2022)



WWW.6KINCAIDLANE.COM



SARITTE HAREL
973.713.9464
saritte@harelrealestate.com



LAUREN SCHRAEDER
908.447.8713
lauren@harelrealestate.com

TOP 3 NJ REALTORS*
TOP 1.5% OF AGENTS NATIONWIDE**
NJ REALTORS® Circle of Excellence Sales
Award®, 2007-2022