



28 CROSS ROAD · HANOVER TOWNSHIP

28CROSSROAD.COM

h | THE
SARITTE HAREL
TEAM BRINGING PEOPLE HOME

SARITTE HAREL: 973.713.9464 • SARITTE@HARELREALESTATE.COM
STEFANIE MARCANTONIO: 201.835.9847 • STEFANIE@HARELREALESTATE.COM

kw PREMIER
PROPERTIES
KELLERWILLIAMS.

Nestled on over half an acre on a tranquil tree-lined street, this inviting bi-level residence offers 4 bedrooms, 2 full baths, and 1 half bath, spread across two beautifully finished levels of living space.

Step inside and be greeted by a welcoming foyer. The charming living room features oversized windows that bathe the space in natural light, along with a cozy wood-burning fireplace perfect for evenings with family and friends. Host gatherings effortlessly in the spacious dining room, which flows seamlessly into the kitchen. With its wood cabinets, abundant storage, new stove and a skylight, this kitchen is perfect for any home chef. Relax and unwind in the family room, where parquet wood floors and panoramic views of the backyard create a serene retreat. With sliders leading to the deck and paver patio, outdoor entertaining is a breeze.





Retreat to the sunlit primary suite with multiple window exposures and an en-suite bathroom. Two additional spacious bedrooms are located on the first floor while the fourth bedroom is situated on the lower level.

The lower level boasts a welcoming den with yet another wood-burning fireplace. The recreation room with access to the backyard and paver patio is ideal for indoor-outdoor living. The heated tile flooring on this level provides an extra touch of warmth and comfort.

Outside, the expansive flat lot is adorned with mature trees. Enjoy outdoor grilling on the paver patio or simply bask in the beauty of your surroundings. Conveniently located with easy access to Rt 10 and Rt 287, this is more than just a home; it's a lifestyle. Don't miss your chance to make this your forever home.



PARTICULARS

- Bi-level home
- 4 bedroom, 2 full bath, 1 half bath
- Located on a quiet tree lined street
- 2 finished levels of living space
- Situated on .57 acres; Level lot
- Great location with easy access to Rt 10 and Rt 287

HIGHLIGHTS

- Foyer with coat closet
- Charming living room with oversized windows and wood-burning fireplace
- Spacious dining room seamlessly connects to living room and kitchen
- Sunlit kitchen with wood cabinets, ample storage space, new stove 2023, skylight and sliders to family room

- Family room with parquet wood floors, recessed lighting, skylights and sweeping views of the backyard. Set of sliders provide easy access to deck and paver patio
- Primary suite with multiple window exposures and en-suite bathroom
- 1st floor houses 2 additional spacious bedrooms. 4th bedroom located on the lower level.
- 1st floor hall bathroom with tub/shower, single sink vanity and neutral decor
- Ample closet space throughout
- Floors: Hardwood, tiling, carpeting
- Heated lower level tile flooring
- Walk-out lower level recreation room with access to paver patio
- Den with wood-burning fireplace
- Lower level laundry room

- Central AC
- Heat: Baseboard and forced hot air
- Water softener
- Newer water heater 2019

EXTERIOR

- Private flat level lot with mature trees
- Deck and large paver patio
- Outdoor grill
- 2 car attached garage
- French drains throughout the yard that run out to the street



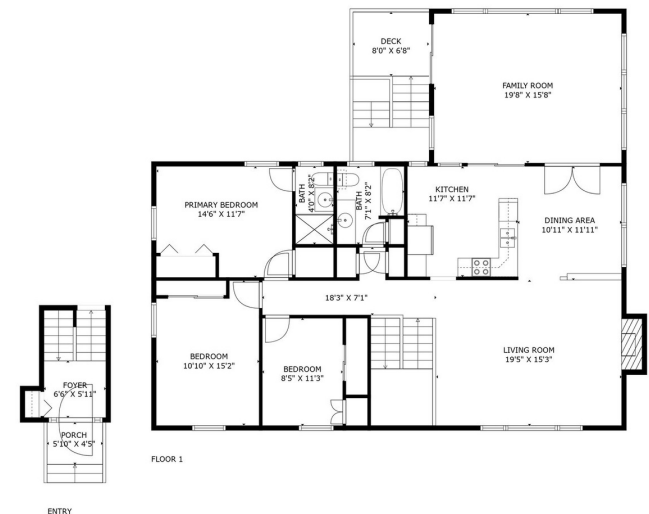
28CROSSROAD.COM



SARITTE HAREL
973.713.9464
saritte@harelrealestate.com



STEFANIE MARCANTONIO
201.835.9847
stefanie@harelrealestate.com



Ranked Top 1% NJ Realtors*

Top 5 Real Estate Agents in NJ*

NJAR Circle of Excellence Sales Award 2007-2024